



In Memoriam

We have received word of the deaths of the following Elfun:

George G. Wilson, 92 of Jamesville, NY, died on January 23, 2018

Carl S. Monz, 87 of Camillus, NY, died on March 1, 2018

Upcoming Social Events

May 10th - Annual Meeting and Luncheon

The Syracuse Elfun Society will hold it's Annual Meeting at Barbagallo's Restaurant on Thursday, May 10th. There will be a Social Hour with a cash bar from 11:30am till 12:30pm. Luncheon will be served at 12:30pm with attendees selecting either a NY Strip Steak, a Stuffed Chicken breast or Stuffed Sole when they make their reservations. The entrée will be accompanied by baked potato, salad, beverages and dessert. Price is \$25 for Elfun and their spouse. A flyer and reservation form accompany this newsletter.

During the meal, Cark Chermak will present a short overview of the status of the Syracuse Elfun Society - summary of the 2018-2018 year, plans for the 2018-2019 year, and a financial overview. To stimulate discussion, cards will be available at the check-in table to allow you to jot down a question for Carl. While you are enjoying your luncheon, Cark will be sweating out an answer to your question.

Following the business portion of the meeting, we are pleased to have Jason Smorol as our guest speaker. Jason assumed the position of General Manager of the Syracuse Chiefs several years ago and has guided the organization through a number of challenges. Jason will reflect on the past, give us some thoughts on the future, and leave plenty of time for questions from the floor. Please note that the reservation deadline is **Tuesday May 1st**!



June 1st - Skaneateles Lake Cruise and Luncheon

Let's celebrate June and hopefully the return of good weather. Here is a return of a perennial favorite! 2-hour luncheon cruise on Skaneateles Lake aboard the Judge Ben Wiles.



The cruise departs Friday June 1st at **11:30 Sharp!** Mid-Lakes will not wait for late arrivals. Please plan time to park in the village visitor lots, pay the meter, and walk to the pier. There are metered spots on the street, but they are limited to 2 hours and will not suffice for the duration of the cruise. We will email confirmations and an attendance list shortly after May 18th so that you can arrange carpools.

New this year, Mid-Lakes features the Long Lake Lunch Buffet: soup du jour; garden salad with balsamic dressing; sliced fresh seasonal fruit; potato salad; sliced turkey breast, ham and roast beef; grilled chicken Waldorf salad; sliced swiss and provolone cheeses; assorted breads from the Patisserie; sliced tomatoes, onions, lettuce, pickles, mayonnaise, mustard and horseradish; assorted cookies from the Patisserie for dessert; coffee, hot tea and lemonade. Cash Bar available.

\$35 per person, dues paying Elfun and spouse/guest, Includes cruise, lunch, tax and tip. We will not issue any tickets; simply check in with Cindy at the pier. Seating is unassigned; just join your fellow Elfun at any table. Your reservation and payment by check must be received by **Friday May 18th**. A flyer for this event is included with the newsletter

June 12th - "Mamma Mia" and Dinner at Sherwood Inn



Our third 2018 event will be the 2pm matinee performance of Mamma Mia on June 12th, followed by a buffet dinner at The Sherwood Inn. The idea was conceived on a cocktail napkin by a woman as she sat in a London bar. The show debuted in London in 1999, was the first show to open in New York after

(Continued on page 2)

(Continued from page 1)

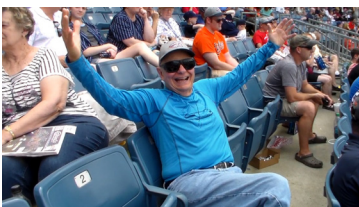
9/11, and has reached the \$1.4 billion mark. All these years later, she still nets 40% of every ticket sold. The music of ABBA weaves around the story of mother, daughter and three potential dads on a Greek island. Story aside, we all know the words and music to the title song as well as *Dancing Queen*, *Winner Takes All*, *Waterloo* and many others. This is a rousing, uplifting show that will have us dancing in our seats. Merry-Go-Round has been requesting this show since 2011 and has been on the wait list since 2014. The theatrical release of the movie sequel will coincide with their run, so they anticipate large, enthusiastic audiences. The flyer for this event accompanies this newsletter – please note the **April 23rd** deadline for making reservations.

July 22nd - Family Day With the Chiefs

Join us on Sunday at 1:05 PM at Alliance Bank Stadium as the Syracuse Chiefs play the Louisville Bats. This annual event has proven to be a great outing for our extended families and this year should be no different.



Price is \$10 per person for Elfun and family members, and includes reserved seat game ticket, \$5 “Conductor Bucks” for concessions per person, and a prepaid parking pass for each family. What a deal!



Gather your entire family (Elfun, spouses/guests, children and grandchildren, aunts, uncles, cousins, nieces, and nephews) together for this wonderful outdoor event and make your reservations today. Based on past experience, the weather will be drenching rain or the most beautiful day of the summer.

The Chiefs have several promotions for this game:

- **Wall of Fame Day:** Fans are invited to help us induct Roy Halladay and other former Chiefs into the Syracuse Chiefs Wall of Fame.
- **Roy Halladay Bobblehead Giveaway:** The first 1,000 fans in attendance will receive a Roy Halladay Sky Chiefs bobblehead presented by

Loretto.

- **Kids Eat Free Sunday:** Kids 12 and under will receive a voucher for a Hofmann hot dog, a Coca-Cola fountain drink, a popcorn, and a Perry's ice cream cup!

Your payment and reservation form must be received by June 22nd. Please enclose a Business-Size envelope large enough to contain your tickets and vouchers.

Elfun Planning Guides

Several years ago Elfun published several planning guides. The first was the “Elfun Survivor’s Data Sheet” which provided several handy forms that can be used to capture the information on an Elfun’s estate that a surviving spouse would need. The second was the “Elfun Survivor’s Guide” that the surviving spouse would find useful when handling the estate. These guides are still useful and copies of them as PDF files are being sent along with this newsletter to all who receive this newsletter by e-mail. For those Elfun who receive the newsletter only as a hard copy, we have a few hard copies of these planning guides that are available on a first come, first served basis from the Newsletter Editor.



While not a part of the two planning guides, Elfun also published a list of contacts and phone numbers that are useful for the benefits associated with membership in the Elfun Society. While there have been a number of changes, not the least is the dissolution of the Elfun Society and the establishment of local chapters, many of these phone numbers are still useful and the list is included on the following page.

The list has been annotated to show the status of each of the phone numbers or web addresses. A few that are no longer active (or even though active are no longer useful) are highlighted in red. A few others that are still active but not useful in today's environment, GE Employee Product Purchase Plan (EPPP) is an example, are listed with comments about their usefulness. But in many cases the contact points are still active and useful.

(Continued on page 4)



GE Pension Benefits Inquiry Center

For questions regarding:

- GE Pensioners Hospital Indemnity Plan
- GE Medical Care Plan for Pensioners
- GE Pensioners Prescription Drug Plan
- GE Medicare Plus
- Address changes
- Pension payments
- Insurance plans
- Lost or missing checks
- Estate tax inquiries
- Death benefits/notification

United Healthcare

- Claims: MCPP, GEMIP, PHIP, Elfun
- Dental coverage, ID cards, premiums

United Healthcare (Direct Bill)

CVS Caremark

SilverScript

- Mail-Order Drug Plan, refills, prices, order status, questions

Pensioners Vision Value Option (Davis Vision)

GE Long Term Care

- Coverage, cost, options, features, enrollment

Elfun Long Term/Mutual Funds

- Purchases, redemptions, phone investment switches, address changes, transfers, IRA's
- Elfun Funds – Daily Value Update
- Elfun Mutual Funds, S&S Funds, GE Funds

GE Interest Plus

GE Stock Share Owners Services

- Redemption, dividend payment/reinvestment, certificate replacement, transfers

GE Transaction Processing Center – S&SP (401K)

- Account balance, general inquiry, statement of account, withdrawals
- Investment switching (personal identification number (PIN) registration)

GE Program Support

GE Benefits Center

Information regarding your SSO ID

GE Matching Gifts Program

GE Store

SSO required to log onto this site

GE Employee Product Purchase Plan (EPPP)

Current product information & discount amounts

Product reimbursement questions

Send receipt and Social Security number to:
GE Product Purchase Plan, PO Box 534156,
Saint Petersburg, FL 33747-4156

Electric Insurance Elfun Advantage Program

- Personal excess liability, auto, homeowners, and boat insurance

Social Security Administration

Medicare Hot-line

1-800-432-3450

Still Active

Still Active

“You have reached a non-working number at United Health Group.”

1-800-848-8406

Still Active

Informs you that coverage ended 1/1/2016, refers you to 855-873-0103

1-888-686-9576

1-800-509-9891

1-800-594-4508

Still Active

Answers as “Genworth LTC Service Center”

1-888-433-9370

1-800-638-2528

Answers as “State Street Global Advisors Fund”

1-800-242-0134

“Unmonitored Mailbox for GE Capital Direct”

1-800-433-4480

1-800-786-2543

Still Active

“GE Retirement Savings Plan Service Center”

1-877-554-3777

Suggests you go to OneHR.GE.COM for faster service

1-800-252-5259

Transfers you to GE-AppliancesStore.com, SSO Login required

1-800-305-0669

www.gestore.com

“GE Appliances Answer Center”

1-800-626-2000

1-800.922.0406

“800 Operator” answers

1-800-227-2757

Still Active

Both are still active

1-800-772-1213

1-800-633-4227



(Continued from page 2)

And For LM Employees and Retirees.....

While the information in the two Elfun guides is valuable in general, in some cases it is very specific to General Electric retirees so here's some of the differences for Lockheed Martin.

You can contact Lockheed Martin two different ways:

By using the internet, log on to **lockheedmartin.com**

- Then click on the "Employees" button at the top of the screen.
- Then click on "Retirees" at the left side of the screen.
- The next page will offer several links for information relating to retiree health plan benefits, pension payroll, and savings plan information. You will probably want to click on "Lockheed Martin Service Center" which will take you to the Login Screen where you need to enter your LoginID (your SSN) and password.
- Once at the Service Center you can navigate through the various benefit areas to (hopefully) find what you are interested in. But note that this is an automated system that you can access 24/7 (the good news) but you may not be able to speak to a real live person (the bad news).

By calling the Lockheed Martin Employee Service center at 866-562-2363.

- There are a number of prompts that you can use: **3** – death in family; **5** – report death; ***** - active employees to speak to an independent benefits representative; **0** – talk to a person.
- Lockheed Martin strongly recommends that in the case of a death or other major issue you use the "0" option.
- The bad news? The Service Center is only open Monday-Friday, 8am-8pm eastern time.

Holiday Party Survey

Traditionally the Syracuse Elfun Society holds its Holiday Party the first Saturday in December, at the Lakeshore Yacht and Country Club with a catered dinner and a live band. As attendance has been decreasing over the past several years the board is ad-

ressing whether the traditional Holiday Party should be continued, and if so should the format be changed. A simple member survey has been developed and a random sample of those who receive a hard copy of this newsletter will also find a post-paid survey card in the newsletter. We encourage you to provide your feedback and suggestions to help us plan this year's Holiday Party. Thanks for taking the time to respond!

To help us plan a 2018 Elfun Holiday Party, have you attended this event in the last several years? yes no

If you answered "no" was it because: It cost too much

Don't like to dance Didn't like the meal choices

Don't like to drive after dark Didn't like the location

Don't get out much Other reason _____

If we plan a 2018 Holiday Party, would you prefer:

Daytime event Nighttime event

Weekday event Weekend event

Live band Disk jockey

Any comments? _____

2018-2019 Dues

It's that time of year again to pay dues, elect Directors to the Syracuse Elfun Society's Board of Directors, and indicate your preference for receiving communications from the society. An attachment to this newsletter includes several forms to assist you:

Surviving Spouses - You don't need to pay dues, all you need to do is indicate that you wish to continue receiving communications from the Society, and tell us whether you'd like to receive them by e-mail or as a hard copy mailed to you. It's a good idea to provide your mailing and contact information to make sure that our records are up to date.

Syracuse Elfun Society Members - Lucky you, you get to provide the same information as the Surviving Spouses do, plus you get to pay your dues of \$15 (which haven't changed in many, many, many years!). Just as a comment to those of you who wish to receive communications in hard copy format - you will receive the quarterly newsletters, but because of the cost of mailings which run about \$1/each, we do not mail hard copies of other communications such as program updates, reprints of articles concerning GE, event reminders, and the like.

(Continued on page 6)



1948, and Retirement Was Simpler Back Then

I retired at 55 with \$150 a month

... and I'm making more money than ever!

I've always said that a man could make a hobby pay real money if he could give it as much *time* as his job. And that's what I'm doing! But it wasn't till I was 55, and retired with a life income of \$150 a month, that I had a chance to do as I pleased.

For some, it might have been wood-working, or painting, or even inventing. With me, it was writing. I'd always longed to write, and *did* write a little. Today, I'm spending full time at it. And earning more than I ever did at the office.

What's more, I'm free to go where I choose. To take trips—get about the country a bit.

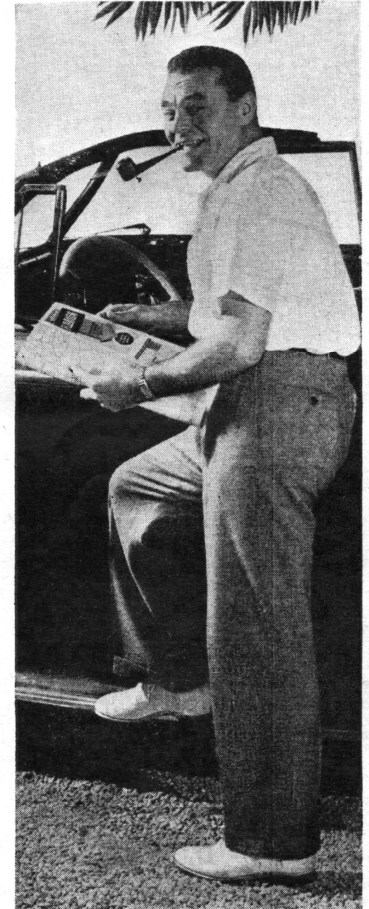
I got the idea fifteen years ago, when I was forty. At that time, I had a good job. I couldn't afford to quit work and give full time to my hobby. Suppose I *didn't* make out? Well, a family man doesn't quit a good job to do what he pleases.

Then, one night in the spring of 1933, I was running through a magazine planning an article I wanted to write in my spare time. I noticed a picture of a couple sailing for Havana. They were retired, the ad said, on a life income. No, they weren't rich. They'd planned, it explained, to make part of their income during peak working years pay for a retirement income later on. What they had was called a Phoenix Mutual Retirement Income Plan.

Why couldn't I use a Phoenix Mutual Plan to help me do what I really wanted to do? With \$150 a month, I could retire and make my hobby a full-time job.

At the bottom of the ad was a coupon offering more information. I mailed it in. Pretty soon I got a booklet telling about Phoenix Mutual Plans. Yes, this was for me! It told how in 15 years I'd get a retirement income of \$150 a month for life. Meanwhile, it would protect my family with life insurance.

That very week I applied and qualified for a Phoenix Mutual Plan. Fifteen years went fast, all right. As soon as my first Phoenix Mutual



check arrived I retired to do what I dreamed of doing. I've made out pretty well, selling short stories and travel pieces. With my retirement income and my earnings, *today I'm making more money than ever.*

Send for Free Booklet

This story is based on a typical experience. Assuming you start at a young enough age, you can have the life income you need at retirement—beginning at age 55, 60, 65 or older. Send the coupon and receive, by mail and without charge, a booklet which tells about Phoenix Mutual Plans. Similar plans are available for women.

Don't delay. Send for your copy now.

“..... But it wasn't till I was 55 and retired with a life income of \$150 a month, that I had a chance to do as I pleased.”

“..... Yes, this was for me! It told how in 15 years I'd get a retirement income of \$150 a month for life. Meanwhile it would protect my family with life insurance.”

PHOENIX MUTUAL
Retirement Income Plan
GUARANTEES YOUR FUTURE

<p>PLAN FOR WOMEN</p> <p>PHOENIX MUTUAL LIFE INSURANCE Co. 735 Elm Street, Hartford 15, Conn.</p> <p>Please mail me, without cost or obligation, your illustrated booklet, describing Retirement Income Plans for women.</p> <p>Name _____ Date of Birth _____ Business Address _____ Home Address _____</p>	<p>PLAN FOR MEN</p> <p>PHOENIX MUTUAL LIFE INSURANCE Co. 735 Elm Street, Hartford 15, Conn.</p> <p>Please mail me, without cost or obligation, your illustrated booklet, showing how to get a guaranteed income for life.</p> <p>Name _____ Date of Birth _____ Business Address _____ Home Address _____</p>
-------------------------------------------------------------------------------------------------------------------------------------------------------------------------------------------------------------------------------------------------------------------------------------------------------------------------------------	--------------------------------------------------------------------------------------------------------------------------------------------------------------------------------------------------------------------------------------------------------------------------------------------------------------------------------------

(Continued from page 4)

And as a reminder to everyone, if you move or change your e-mail address during the year, please let us know! If you don't notify us when you move, the Post Office will generally forward your mail for a year but they do not notify us of your new address. And if you change your e-mail address, all we get is a "bounce back" message that the e-mail could not be delivered to you, so we have no way of determining what your new e-mail address is. Thanks.

Association Island

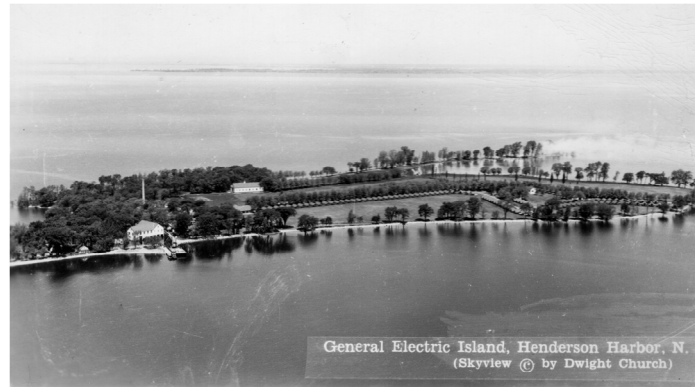
Association Island was once part of a continuous protrusion of land known in the 19th century as Six Town Point. Erosion from Lake Ontario waves divided Six Town Point into several small islands at some time prior to 1898. Association and Hoveys Islands remain connected to land at the north side of Henderson Harbor

In 1905 the National Electric Light Association bought the island, which resulted in the name "Association Island". NELA management used it for meetings. General Electric, after it acquired NELA in 1911, also used the island for company meetings.

The Elfun Society was founded on the island in 1928. The society's logo was a drawing of a large elm tree from the island. General Electric donated the island to the YMCA in 1959.



After receiving the island in 1959, the YMCA ran a



boy's summer camp on the island for several years until abandoning it after 1967.

A non-profit group ran sailing and wind boarding competitions on the island in the 1970s. The US sailing team was based there while preparing for the 1976 Montreal Olympics, which held sailing competitions at Kingston, Ontario, about 30 miles to the north. The island currently is a KOA campground.

Syracuse Elfun Society Board of Directors

SyracuseElfunSociety.org

Position	Individual	E-mail	Phone
Chairperson	Carl Chermak	CChermak@aol.com	1-315-637-0380
Vice-Chairperson	open		
Secretary	open		
Treasurer	Bob Bryerton	BryertonRobert@gmail.com	1-315-395-1726
Webmaster/DB	Bob Ruth	RuthRob@msn.com	1-315-451-0685
Communications	Steve Auyer	n2tkx@arrl.net	1-315-451-7359
Seniors	Dick Enright	donnaue1@verizon.net	1-315-457-1364
Social Events	Cindy Chermak	Chermak@msn.com	1-315-637-0380
Work Projects	Marv Hahn	MarvH@twcny.rr.com	1-315-699-2621
At Large	Fred Wenthen	Fred.Wenthen@gmail.com	private
At Large	Neal Schantz	NSchantz37@verizon.net	1-315-652-6467
At Large	open		